



Steering handle

Sealed multifunctional tiller arm (IP65) suitable for high-pressure cleaning and disinfection. All the controls on the handle are easy to reach ensuring productivity and precision and so greater efficiency. When released, the handle returns to the vertical position without bumping or rebound, thanks to a gas spring with integrated braking system.



The mast consists of strong stainless steel ensuring torsion and bending rigidity. All the components as lifting cylinders, bearings, chains are fully stainless steel for hardest applications in corrosive and humid environments.



Side battery extraction facility

The unit is equipped with 24V180Ah battery with gas recycle and built-in charger for easy charging at any plug socket. The big battery capacity 24V 250Ah as option ensures an optimal working autonomy. The battery, positioned on plastic sliders, is extracted from the side for heavy applications and different working shifts. The use of single or double battery stand with wheels makes the battery extraction easier.



Instrument panel cover

The instrument panel is protected by a corrosion-proof and washable transparent plastic cover to grant the maximum level of hygiene, available also by stainless steel cover (as option). The 3-colour LED battery monitor shows the battery discharge status at all times.



Maintenance

The maintenance is easier thanks to the opening in the chassis which allows an easy access to the drive compartment in order to minimize the routine maintenance costs.

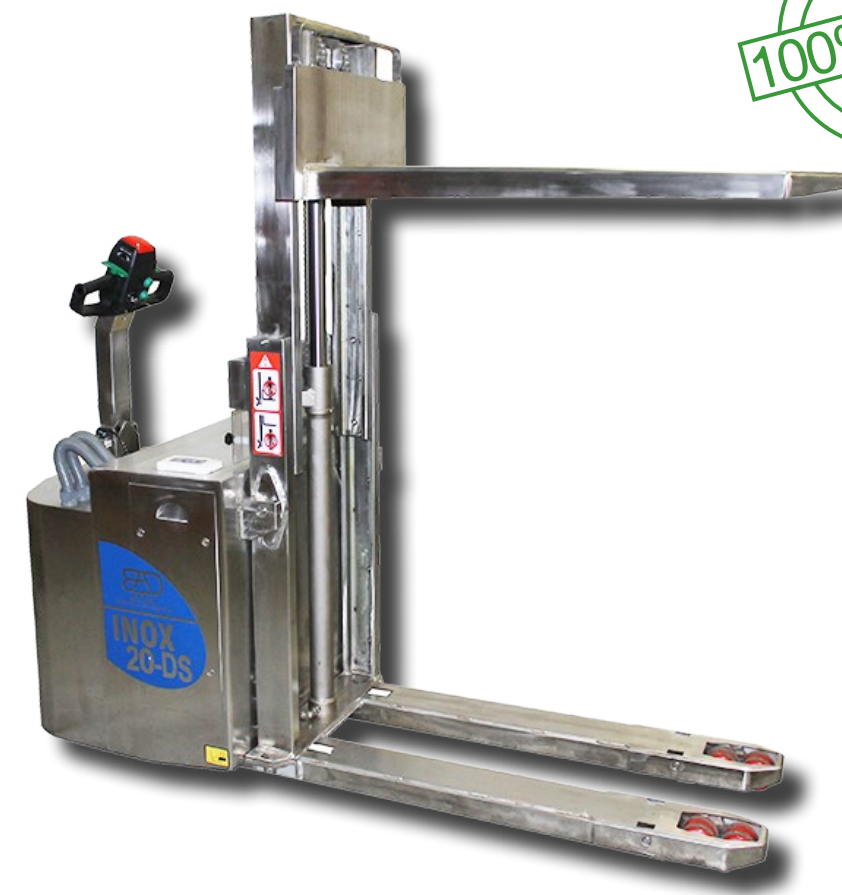
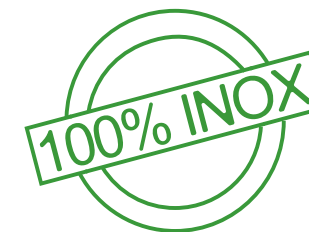


Special applications: clean rooms, laboratories and others on request.



Pedestrian pallet truck with mast

20-DS



Efficiency, safety, stability, hygienic and easy clean design

Stainless steel pedestrian pallet truck which combines the traditional function of the electric pallet trucks (2.0 t capacity) to the possibility of lifting the load (1.0 t capacity) at 1.500 mm from the ground on request. It is ideal for picking and stacking operations to work in warehouses with reduced distances and spaces and for the safely loading of overlapped loads. It is able to cope effortlessly with uneven floors, ramps or loading bridges. It is available also with two separate traction motors which assure powerful drive and excellent handling on uneven and wet surfaces thanks to the excellent side stability. 100% stainless steel AISI 304, all the components as chassis, axes, levers, lifting cylinders, masts are manufactured in stainless steel to grant the protection of the products and the resistance to corrosion in the aggressive and corrosive environments. With this specification, the truck is ideally suited for the use in the food handling, clean rooms and laboratories in the chemical industries such as pharmaceutical, biomedical, cosmetics, aeronautics and microelectronics.

Compact desing and cleaning-friendly

The high quality stainless steel (version AISI 316 available with improved corrosion resistance to sea water and corrosive environments) offers an abrasion-resistant and smooth surface even with intensive use avoiding dirt deposits and the spread of germs and bacteria. The unit has been designed and built to withstand regular high-pressure cleaning and disinfection. The water is able to flow over the surface and the hard-wearing seals prevent the entrance of fluids or water into the drive compartment. All the electric components are waterproof and corrosion-proof. The standard execution allows to work in -20° cold store areas (cold storage) and the use of the hydraulic oil food grade NSF-H1 offers a full protection of the food in case of any random contact.

Drive and electronic system

The reliable sensor less three phase current traction drive motor ac is able to meet the most demanding performance requirements delivering the necessary power under all load conditions as the traction speed exactly depends on the position of the drive throttle. The unit is equipped with anti rollback devices, the control checks all the units functions and allow many adjustments to optimise the units performances, adapting it to the type of work application it has to carry out. All the parameters related to drive and electric braking are electronically adjustable by a programming console in accordance with the customers requirements.

Hydraulic functions

The 2kW powerful and noiseless motor is highly inductive and the torque delivered offers performance with low current absorption. The lifting and lowering of the load are activated by push buttons on tiller arm which allow the operation without taking the hands off the steering handle.

Optimal cornering on slippery and wet surfaces

The antislippery no-marking polyurethane traction wheel (rough wheel available as option) grants high stability in every travel situation and the suspended adjustable support wheels always grant constant grip to the floor.

Braking system

There are three braking systems:

- braking on reversal of direction of travel (service braking);
- emergency braking which automatically occurs on release or extreme lowering of the steering handle;
- parking brake with steering handle in the vertical position.



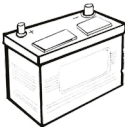
BADA BeNeLux - ACD Handling
Breedveld 37 - 1702 Groot-bijgaarden - Belgium
Tel. +32 (0)2 474.38.48 - Fax. +32 (0)2 474.38.40
Email: info@acdhandling.be
www.acdhandling.be

Characteristics	1.1	Manufacturer		Italiana Carrelli Elevatori srl	
	1.2	Model		20-DS	
		Execution			
	1.3	Drive		E	
	1.4	Operator type		pedestrian	
	1.5	Load capacity / rated load	Q	t	
		Load capacity mast lift	Q	t	1.0
		Load capacity initial lift	Q	t	2.0
		Load capacity initial lift + mast contemporaneously	Q	t	2.0
	1.6	Load centre distance	c	mm	600
Weights	1.8	Load distance (centre of load axle to fork face)	x	mm	982
	1.9	Wheelbase	y	mm	1.745
	2.1	Service weight incl. battery (see line 6.5)		kg	800
	2.2	Axle loading, laden front/rear		kg	
	2.3	Axle loading, unladen front/rear		kg	
Wheels Chassis	3.1	Tires		mm	polyurethane
	3.2	Tire size, front		mm	230 x 75
	3.3	Tire size, rear		mm	83x90
	3.4	Additional wheels dimensions		mm	100x50
	3.5	Wheels, number front / rear (x = driven wheels)		n°	(1x +2) / 4
	3.6	Track width, front	b10	mm	542
	3.7	Track width, rear	b11	mm	380
Basic dimensions	4.2	Mast lowered height	h1	mm	1.180
	4.4	Lift	h3	mm	1.500
	4.5	Mast extended height	h4	mm	1.940/2.050
	4.6	Initial lift	h5	mm	110
	4.9	Height of tiller arm in drive position min. / max.	h14	mm	1.092/1.395
	4.15	Forks lowered height	h13	mm	95
	4.19	Overall length	l1	mm	2.057
	4.20	Length to face of forks	l2	mm	907
	4.21	Overall width	b1	mm	786
	4.22	Forks dimensions	s/e/l	mm	75/180/1.150
	4.23	Forks holder plate width	b3	mm	660
	4.25	Width over forks	bs	mm	560
	4.32	Ground clearance, centre of wheelbase	m2	mm	15
	4.33	Aisle width for pallets 1000 x 1200 crossways	Ast	mm	
	4.34	Aisle width for pallets 800 x 1200 lengthways	Ast	mm	2.257
	4.35	Turning radius	Wa	mm	1.692
Performances	5.1	Travel speed laden / unladen		km/h	5.8 / 6
	5.2	Lifting speed laden / unladen		m/s	0.10 / 0.15
	5.3	Lowering speed laden / unladen		m/s	0.30 / 0.20
	5.8	Max gradient performance		%	5 / 10
	5.10	Service brake			elettromagnetic
Electric Motor	6.1	Traction motor, rating S2 60 min		kW	1,2
	6.2	Lift motor, rating S3 15%		kW	2
	6.3	Battery according to DIN 43531 / 35 / 36 A, B, C, no			DIN
	6.4	Battery voltage, nominal capacity K5		V/Ah	24/180 (250*)
	6.5	Battery weight		kg	175
	6.6	Energy consumption according to VDI cycle		kW/h	
Others	8.1	Type of drive control			ac
	8.4	Sound level at driver's ear according to EN 12 053		dB(A)	< 70
					* optional

Technical specification according to VDI 2198, technical values are referred to the standard product. Different masts, different tires, additional equipment, etc. could produce other values. Information and data are given for information only, Italiana Carrelli elevatori srl will have the sole right for technical changes and improvements without giving any notice.



COLD STORE EXECUTION PROTECTION



SIDE BATTERY EXTRACTION



COMPLETELY WASHABLE



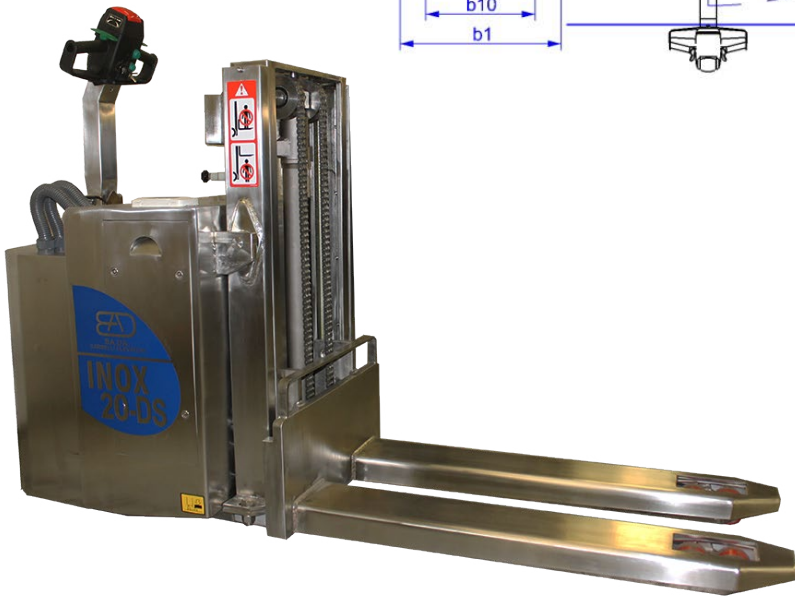
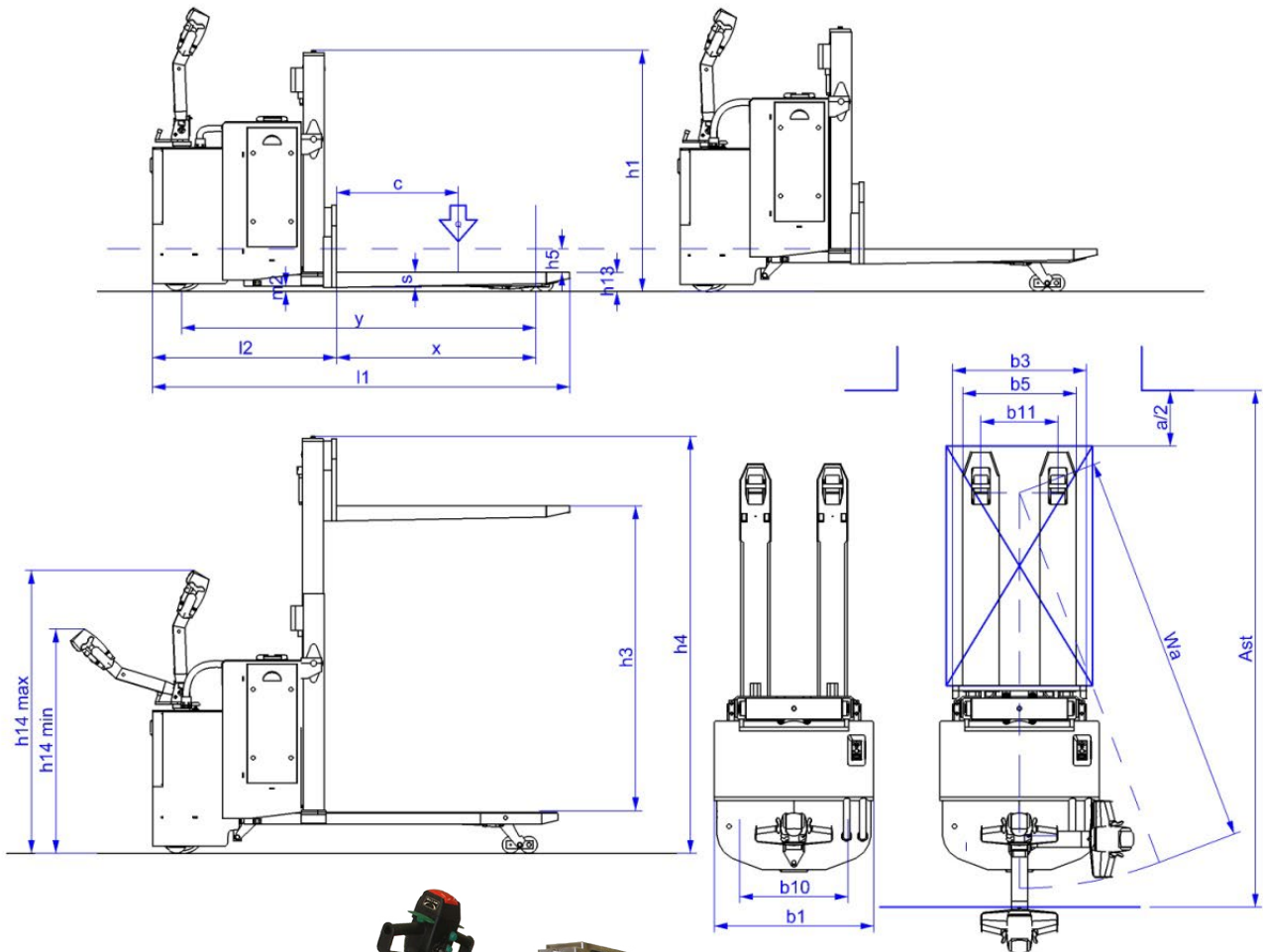
CLEANING AND HYGIENE



NSF- H1 HYDRAULIC OIL



CUSTOM PRODUCTS



Options package			
stainless steel AISI 304	<input type="radio"/>	electronic braking	<input type="radio"/>
stainless steel AISI 316	<input type="radio"/>	-20° cold store execution	<input type="radio"/>
ruilo anteriore doppio	<input type="radio"/>	hydraulic oil food grade NSF H1	<input type="radio"/>
anti slippery no-marking polyurethane traction wheel	<input type="radio"/>	instrument panel protected by stainless steel cover	<input type="radio"/>
rough anti slippery no-marking polyurethane traction wheel	<input type="radio"/>	BDI hourmeter with lifting cut-off at 80% discharge	<input type="radio"/>
electromagnetic parking braking	<input type="radio"/>	traction battery 24V 180Ah built-in charger 24V 20A	<input type="radio"/>
electromagnetic parking braking	<input type="radio"/>	single and double battery stand with wheels	<input type="radio"/>
anti roll-back system	<input type="radio"/>		

- ☒ Standard
- ☒ Optional