

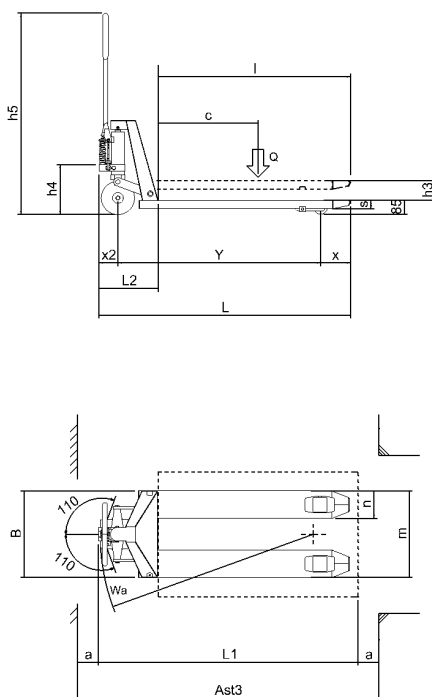
Hand pallet truck entirely built in stainless steel AISI 304 (including the pump and the hydraulic components) suitable to work in the aggressive and corrosive environments where the cleaning and the hygiene are the most required values and where there is serious problem of corrosion related to the use of corrosive acids and saline solutions. The bearings are sealed waterproof and the bushings are polyamide as required by the food industry. It is the ideal and clean solution for the handling in the agrifood, chemical and pharmaceutical industries. It is corrosion-proof, maneuverable and ergonomic and it is built to withstand regular high-pressure cleaning and disinfection satisfying the strictest hygienic regulations. It is also available in stainless steel AISI 316.



**Special applications: clean rooms, laboratories and others on request.**

#### Technical features

- corrosion-proof chassis for aggressive and corrosive environments
- ergonomic tiller arm, robust long-term durable structure
- built to withstand regular high-pressure cleaning and disinfection avoiding dirt deposits and the spread of germs and bacteria
- hygienic features and easy access to the components (lower cleaning and maintenance cost)
- easy to handle, quick lifting
- maximum stability



Q	t	2.0
C	mm	600
I	mm	1.150
L	mm	1.500
X	mm	180
X2	mm	150
Y	mm	1.200
L2	mm	350
L1	mm	1.500
M	mm	520
N	mm	165
B	mm	520
S	mm	50
H3	mm	115
H4	mm	300
H5	mm	1.215
A	mm	100
WA	mm	1.280
AST3	mm	1.700
WEIGHT	Kg	76/80

#### Options package

- stainless steel AISI 316
- double load wheels
- tailor-made chassis to handle special loads
- custom forks length less or over the standard dimension
- custom forks width and/or external forks width