

Hand pallet truck with electric lifting at 800 mm designed and manufactured to keep the goods at the suitable height to collect/deposit the loads reducing the operator's effort. It is entirely built in stainless steel AISI 304 (including the pump and the hydraulic components) suitable to work in the aggressive and corrosive environments where the cleaning and the hygiene are the most required values and where there is serious problem of corrosion related to the use of corrosive acids and saline solutions. It is equipped with 2 side supports to grant the load stability and the safety of the operator. The bearings are sealed waterproof and the bushings are polyamide as required by the food industry. It is the ideal and clean solution for the handling in the agrifood, chemical and pharmaceutical industries. It is corrosion-proof, maneuverable and ergonomic and it is built to withstand regular high-pressure cleaning and disinfection satisfying the strictest hygienic regulations. It is also available in stainless steel AISI 316.

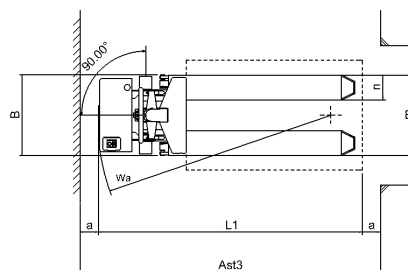
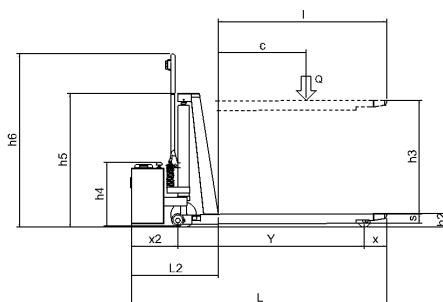


Special applications:
clean rooms, laboratories and others on request.



Technical features

- corrosion-proof chassis for aggressive environments
- built to withstand regular high-pressure cleaning and disinfection avoiding dirt deposits and the spread of germs and bacteria
- robust and durable structure
- best robust and hygienic features (lower maintenance cost)
- easy to handle
- maximum stability
- gel battery 12V 75Ah



Q	t	1.0
C	mm	600
I	mm	1.150
L	mm	1.750
X	mm	155
X2	mm	323
Y	mm	1.272
L2	mm	600
L1	mm	1.750
M	mm	550
N	mm	170
B	mm	550
S	mm	45
H2	mm	95
H3	mm	710
H4	mm	450
H5	mm	920
H6	mm	1.187
A	mm	100
WA	mm	1.450
AST3	mm	1.950
BATTERY	V/Ah	12/75
CHARGER	V/A	12/10
WEIGHT	Kg	149



Options package

- stainless steel AISI 316
- tailor-made chassis to handle special loads
- custom forks length and width